



2Way Passive Compact Loudspeaker for Fixed Installation  
10" Compact Subwoofer for Fixed Installation

# MS SERIES

MS-80/MS-80LT/MS-100

MS-130/MS-200S/MS-400S



### FEATURES

- 5" 2 way passive compact loudspeaker
- High-quality sound
- Nordic birch plywood enclosure
- Monitor / Suspended / Wall Mount

### APPLICATIONS

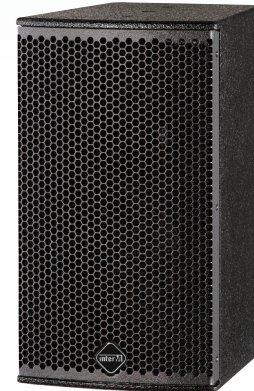
- Delay speaker
- Religious facility
- Educational institution
- Conference room
- Multipurpose room
- Restaurant

### OVERVIEW

MS Series is consist of 5" 2 way, 6" 2 way, 8" 2 way, 10" subwoofer and dual 10" subwoofer system.

MS Series is the loudspeakers that are used for the purpose of reinforcing the intelligibility of the auxiliary speakers or shade area when designing the space required along the main speakers and the secondary speakers. The shape and capacity take the form that may be used as the foreground or the background speaker. MS Series offers a beautiful appearance and excellent sound quality which suit in important facilities. It is made to be installed in various applications.

MS series, has a bright sound character. The superb treble tone it produces is in harmony with the bass reproduction. As a result, it realizes smooth frequency characteristics and is suitable for music playback applications that require the audio and hi-fi sound quality.



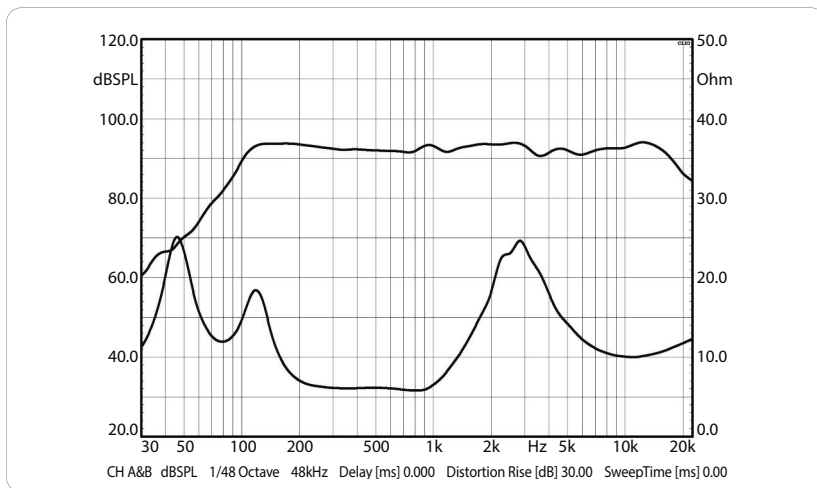
### SPECIFICATIONS

Type	2-Way Passive Loudspeaker
Frequency Response(-10dB)	60Hz~20kHz
Rated Power(AES) <sup>1</sup>	80W
Rated Power(Program)	160W
Rated Power(Peak)	320W
Recommended Power	160W
Sensitivity (1W/1m@300, 400, 500, 600Hz)	88dB
Norminal Dispersion(H×V)	120° Conical
Nominal Impedance	8 Ω
Recommended High-Pass Filter	60 Hz 12 dB/Oct.
LF Driver	5" FaitalPRO Woofer
HF Driver	1" CICADA Soft Dome Tweeter
Enclosure Material	12T Birch Plywood
Grill	Powder Coated Punching Metal
Connectors	2×NL4 + Euroblock
Fittings/Suspension	7 × M6
Finish	WATER-BORNE PAINTING
Color	Black/White
Dimensions(W×H×D)	154×252×212 mm/6.1×9.9×8.3 in
Weights(Net/Shipping)	3.6 kg/7.9 lbs
Optional Accessorys	MSB-80 U Bracket

<sup>1</sup> AES standard, pink noise with 6dB crest factor : 2 hour rated power



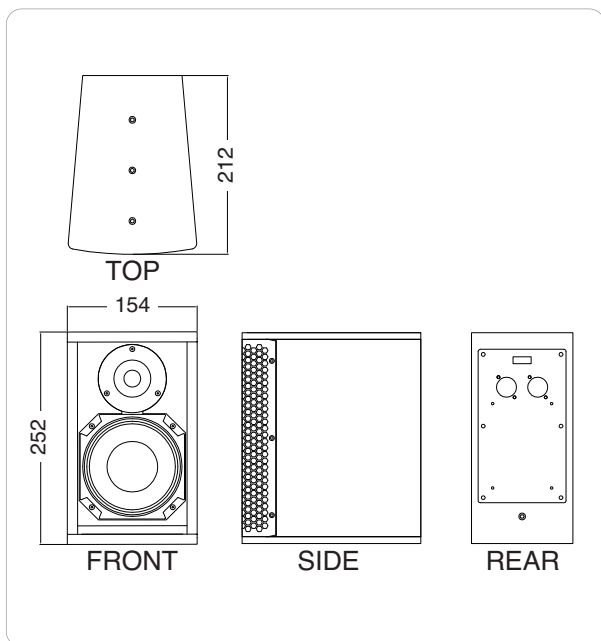
### FREQUENCY/IMPEDANCE RESPONSE



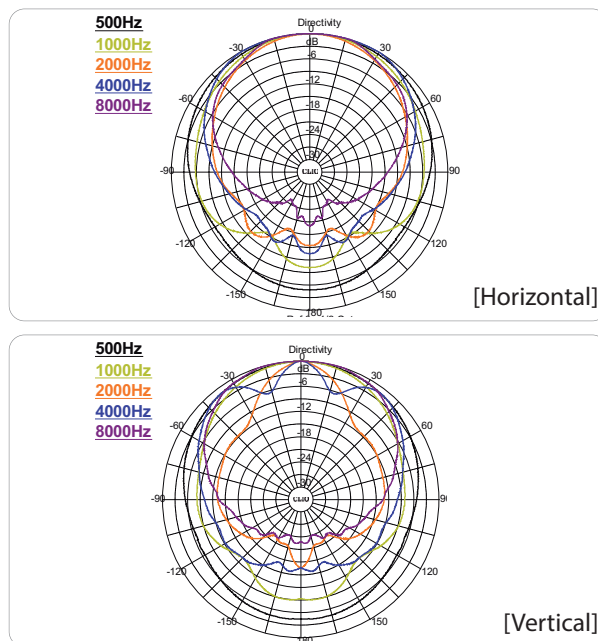
[SPL VS Freq]

[Imp VS Freq]

### DIMENSION



### POLAR PATTERN



### FEATURES

- 5" 2 way passive compact loudspeaker
- High impedance version
- High-quality sound
- Nordic birch plywood enclosure
- Monitor / Suspended / Wall Mount

### APPLICATIONS

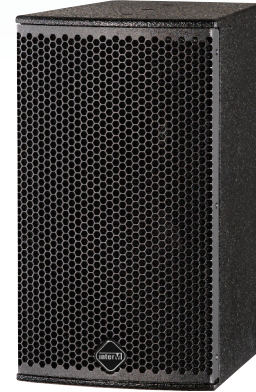
- Delay speaker
- Religious facility
- Educational institution
- Conference room
- Multipurpose room
- Restaurant

### OVERVIEW

MS Series is consist of 5" 2 way, 6" 2 way, 8" 2 way, 10" subwoofer and dual 10" subwoofer system.

MS Series is the loudspeakers that are used for the purpose of reinforcing the intelligibility of the auxiliary speakers or shade area when designing the space required along the main speakers and the secondary speakers. The shape and capacity take the form that may be used as the foreground or the background speaker. MS Series offers a beautiful appearance and excellent sound quality which suit in important facilities. It is made to be installed in various applications.

MS series, has a bright sound character. The superb treble tone it produces is in harmony with the bass reproduction. As a result, it realizes smooth frequency characteristics and is suitable for music playback applications that require the audio and hi-fi sound quality.



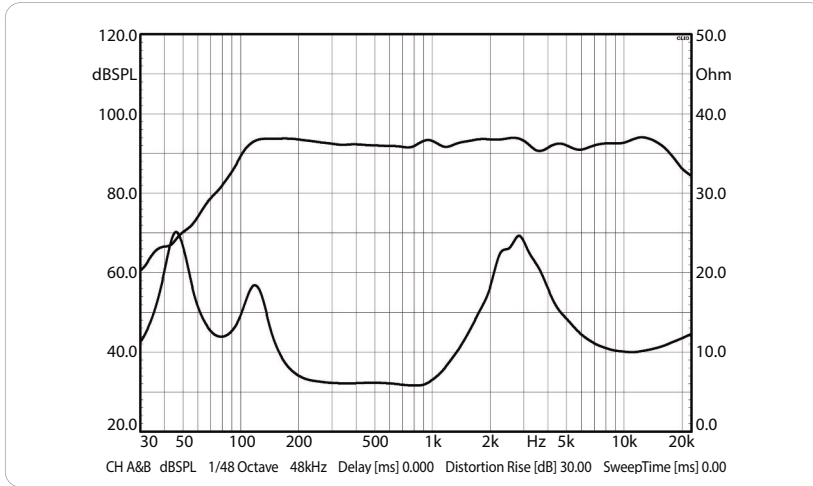
### SPECIFICATIONS

Type	2-Way Passive Loudspeaker
Frequency Response(-10dB)	60Hz~20kHz
Rated Power(AES) <sup>1</sup>	80W
Rated Power(Program)	160W
Rated Power(Peak)	320W
Recommended Power	160W
Sensitivity (1W/1m@300, 400, 500, 600Hz)	88dB
Norminal Dispersion(HxV)	120° Conical
Nominal Impedance	8 Ω
Transformer Taps(70V/100V)	125/250/500/1k/2k(100V) 62/125/250/500/1k(70V)
Recommended High-Pass Filter	60 Hz 12 dB/Oct.
LF Driver	5" FaitalPRO Woofer
HF Driver	1" CICADA Soft Dome Tweeter
Enclosure Material	Ucaliptus
Grill	Powder Coated Punching Metal
Connectors	Screw Type Terminal
Fittings/Suspension	3×M6
Finish	WATER-BORNE PAINTING
Color	Black/White
Dimensions(W×H×D)	152×250×209.5 mm/6×9.8×8.2 in
Weights(Net/Shipping)	3.8kg/8.4 lbs
Optional Accessorys	MSB-80 U Bracket

<sup>1</sup> AES standard, pink noise with 6dB crest factor : 2 hour rated power



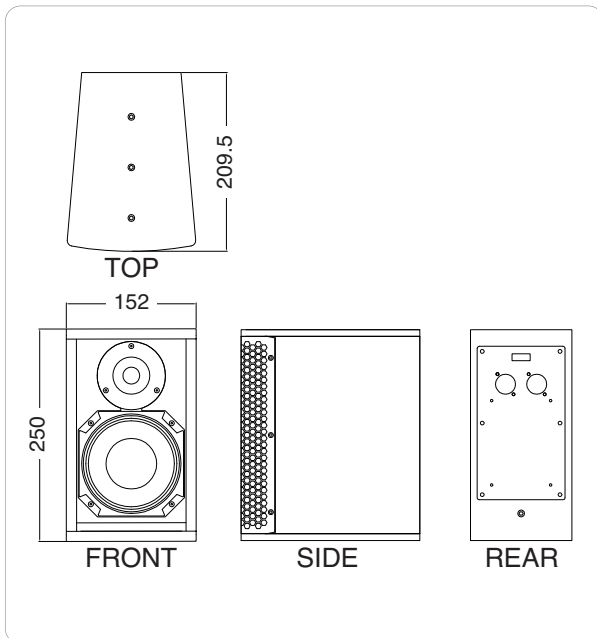
### FREQUENCY/IMPEDANCE RESPONSE



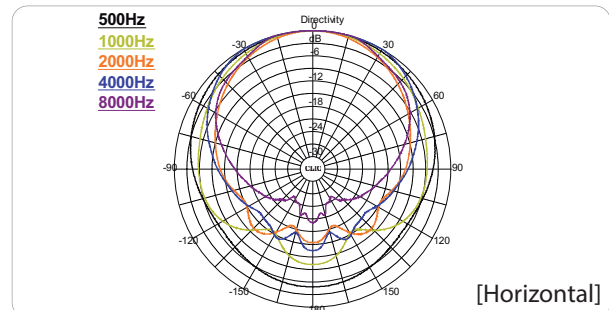
[SPL VS Freq]

[Imp VS Freq]

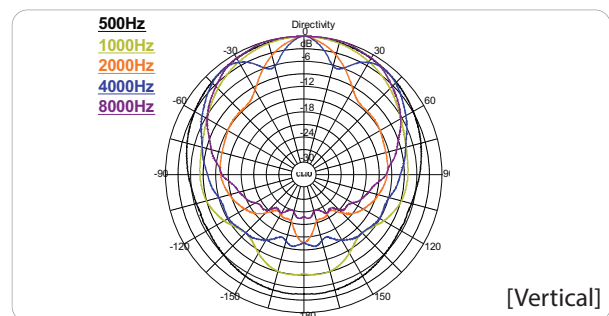
### DIMENSION



### POLAR PATTERN



[Horizontal]



[Vertical]

### FEATURES

- 6" 2 way passive compact loudspeaker
- High-quality sound
- Nordic birch plywood enclosure
- Monitor / Suspended / Wall Mount

### APPLICATIONS

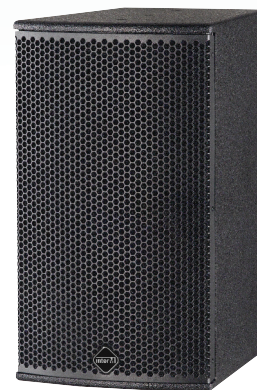
- Delay speaker
- Religious facility
- Educational institution
- Conference room
- Multipurpose room
- Restaurant

### OVERVIEW

MS Series is consist of 5" 2 way, 6" 2 way, 8" 2 way, 10" subwoofer and dual 10" subwoofer system.

MS Series is the loudspeakers that are used for the purpose of reinforcing the intelligibility of the auxiliary speakers or shade area when designing the space required along the main speakers and the secondary speakers. The shape and capacity take the form that may be used as the foreground or the background speaker. MS Series offers a beautiful appearance and excellent sound quality which suit in important facilities. It is made to be installed in various applications.

MS series, has a bright sound character. The superb treble tone it produces is in harmony with the bass reproduction. As a result, it realizes smooth frequency characteristics and is suitable for music playback applications that require the audio and hi-fi sound quality.



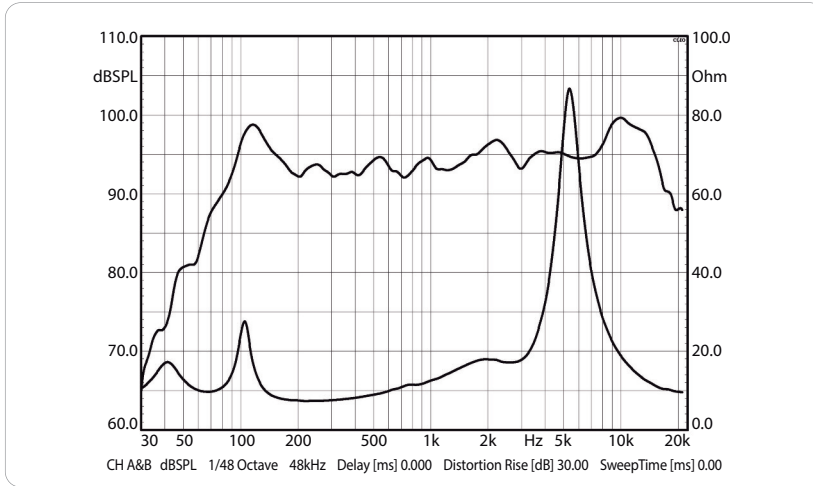
### SPECIFICATIONS

Type	2-Way Passive Loudspeaker
Frequency Response(-10dB)	50 Hz~20 kHz
Rated Power(AES) <sup>1</sup>	100 W
Rated Power(Program)	200 W
Rated Power(Peak)	400 W
Recommended Power	200 W
Sensitivity (1W/1m@300, 400, 500, 600Hz)	90 dB
Normal Dispersion(H×V)	90°×60°(Rotatable)
Nominal Impedance	8 Ω
Recommended High-Pass Filter	60 Hz 12 dB/Oct.
LF Driver	6" FaitalPRO Woofer
HF Driver	1" IMPALA Titanium Compression Driver
Enclosure Material	12T Birch Plywood
Grill	Powder Coated Punching Metal
Connectors	2×NL4 + Euroblock
Fittings/Suspension	8 × M6
Finish	WATER-BORNE PAINTING
Color	Black/White
Dimensions(W×H×D)	211×375×269 mm/8.3×14.8×10.6 in
Weights(Net/Shipping)	6.7 kg/14.8 lbs
Optional Accessorys	MSB-100 U Bracket

<sup>1</sup> AES standard, pink noise with 6dB crest factor : 2 hour rated power



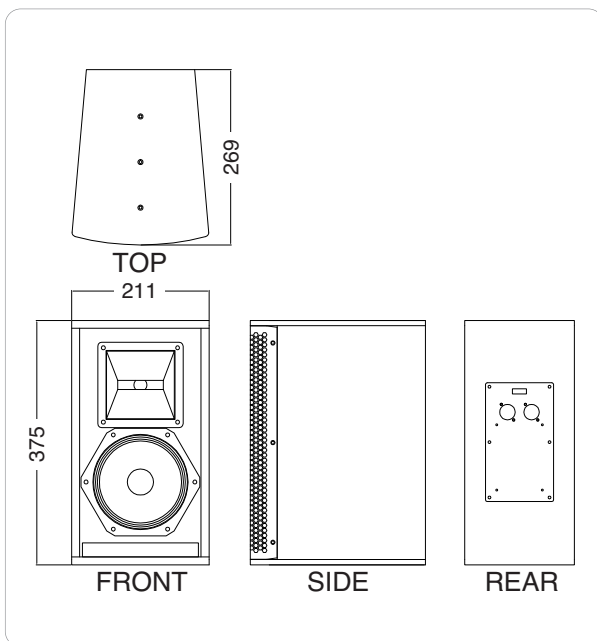
### FREQUENCY/IMPEDANCE RESPONSE



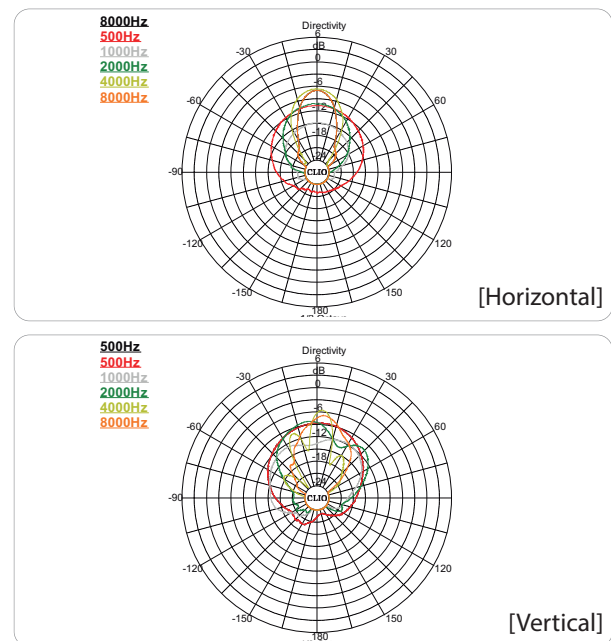
[SPL VS Freq]

[Imp VS Freq]

### DIMENSION



### POLAR PATTERN



[Horizontal]

[Vertical]

### FEATURES

- 8" 2 way passive compact loudspeaker
- High-quality sound
- Nordic birch plywood enclosure
- Monitor / Suspended / Wall Mount

### APPLICATIONS

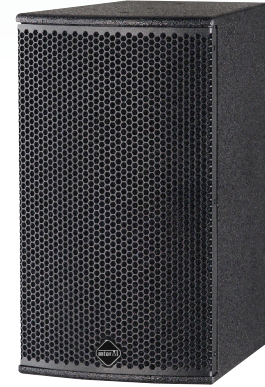
- Delay speaker
- Religious facility
- Educational institution
- Conference room
- Multipurpose room
- Restaurant

### OVERVIEW

MS Series is consist of 5" 2 way, 6" 2 way, 8" 2 way, 10" subwoofer and dual 10" subwoofer system.

MS Series is the loudspeakers that are used for the purpose of reinforcing the intelligibility of the auxiliary speakers or shade area when designing the space required along the main speakers and the secondary speakers. The shape and capacity take the form that may be used as the foreground or the background speaker. MS Series offers a beautiful appearance and excellent sound quality which suit in important facilities. It is made to be installed in various applications.

MS series, has a bright sound character. The superb treble tone it produces is in harmony with the bass reproduction. As a result, it realizes smooth frequency characteristics and is suitable for music playback applications that require the audio and hi-fi sound quality.



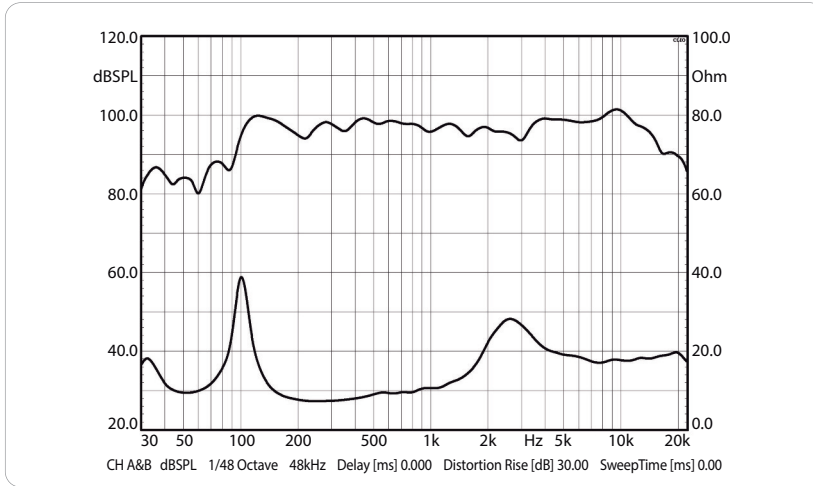
### SPECIFICATIONS

Type	2-Way Passive Loudspeaker
Frequency Response(-10dB)	45 Hz~20 kHz
Rated Power(AES) <sup>1</sup>	130 W
Rated Power(Program)	260 W
Rated Power(Peak)	520 W
Recommended Power	260 W
Sensitivity (1W/1m@300, 400, 500, 600Hz)	94 dB
Norminal Dispersion(HxV)	90°x60°(Rotatable)
Nominal Impedance	8 Ω
Recommended High-Pass Filter	50 Hz 12 dB/Oct.
LF Driver	8" FaitalPRO Woofer
HF Driver	1" IMPALA Titanium Compression Driver
Enclosure Material	12T Birch Plywood
Grill	Powder Coated Punching Metal
Connectors	2xNL4 + Euroblock
Fittings/Suspension	8 x M6
Finish	WATER-BORNE PAINTING
Color	Black/White
Dimensions(WxHxD)	245x420x327 mm/9.6x16.5x12.9 in
Weights(Net/Shipping)	9.1 kg/20.1 lbs
Optional Accessorys	MSB-130 U Bracket

<sup>1</sup> AES standard, pink noise with 6dB crest factor : 2 hour rated power



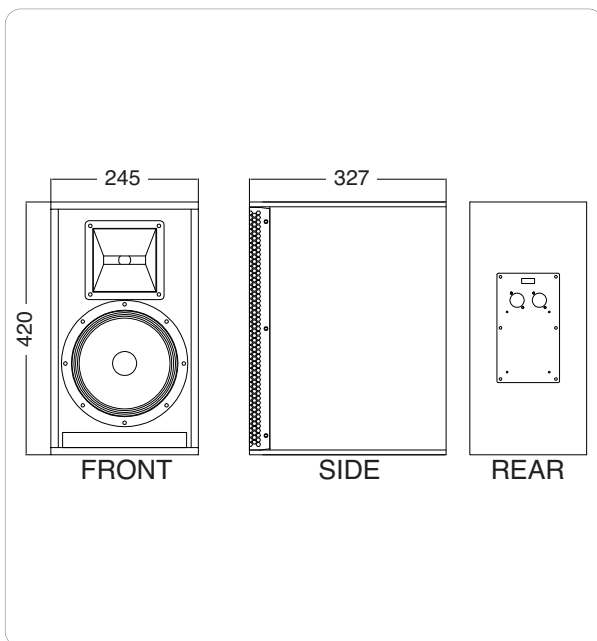
### FREQUENCY/IMPEDANCE RESPONSE



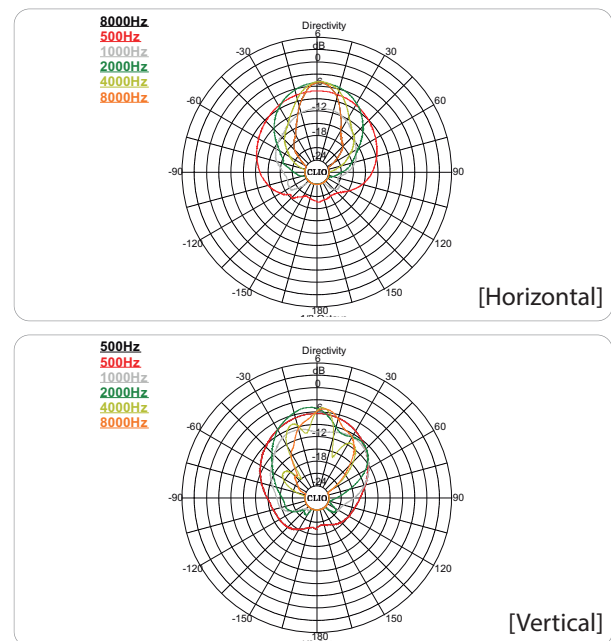
[SPL VS Freq]

[Imp VS Freq]

### DIMENSION



### POLAR PATTERN



### FEATURES

- Compact subwoofer for MS Series 2 way full-range system
- High-quality sound
- Nordic birch plywood enclosure

### APPLICATIONS

- Religious facility
- Educational institution
- Conference room
- Multipurpose room
- Restaurant

### OVERVIEW

MS Series is consist of 5" 2 way, 6" 2 way, 8" 2 way, 10" subwoofer and dual 10" subwoofer system.

MS Series is the loudspeakers that are used for the purpose of reinforcing the intelligibility of the auxiliary speakers or shade area when designing the space required along the main speakers and the secondary speakers. The shape and capacity take the form that may be used as the foreground or the background speaker. MS Series offers a beautiful appearance and excellent sound quality which suit in important facilities. It is made to be installed in various applications.

MS series, has a bright sound character. The superb treble tone it produces is in harmony with the bass reproduction. As a result, it realizes smooth frequency characteristics and is suitable for music playback applications that require the audio and hi-fi sound quality.



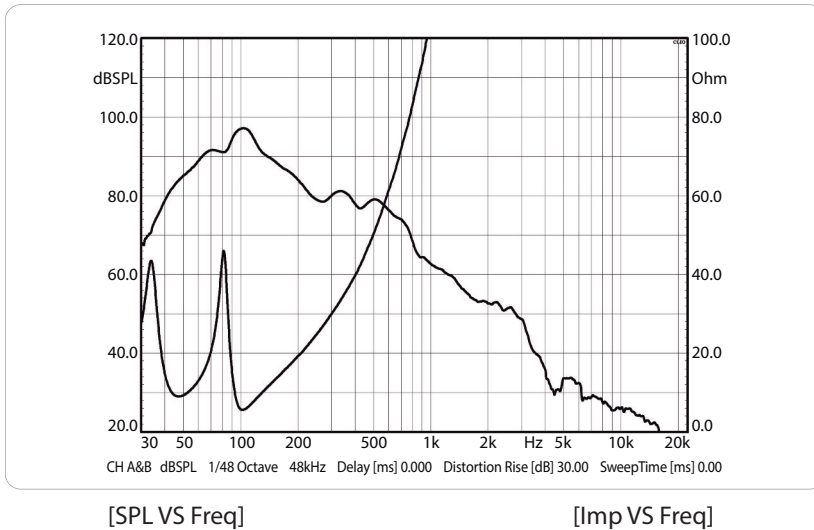
### SPECIFICATIONS

Type	10" Subwoofer
Frequency Response (-10dB)	35 Hz~250 Hz
Rated Power (AES) <sup>1</sup>	200 W
Rated Power (Program)	400 W
Rated Power (Peak)	800 W
Recommended Power	400 W
Sensitivity (1W/1m@300, 400, 500, 600Hz)	94 dB
Norminal Dispersion(H×V)	Omni
Nominal Impedance	8 Ω
Recommended High-Pass Filter	40 Hz 12 dB/Oct.
LF Driver	10" BEYMA Subwoofer
Enclosure Material	12T Birch Plywood
Grill	Powder Coated Punching Metal
Connectors	2xNL4 + Euroblock
Finish	WATER-BORNE PAINTING
Color	Black/White
Dimensions (W×H×D)	365×320×435 mm/14.4×12.6×17.1 in
Weights(Net/Shipping)	13 kg/28.7 lbs

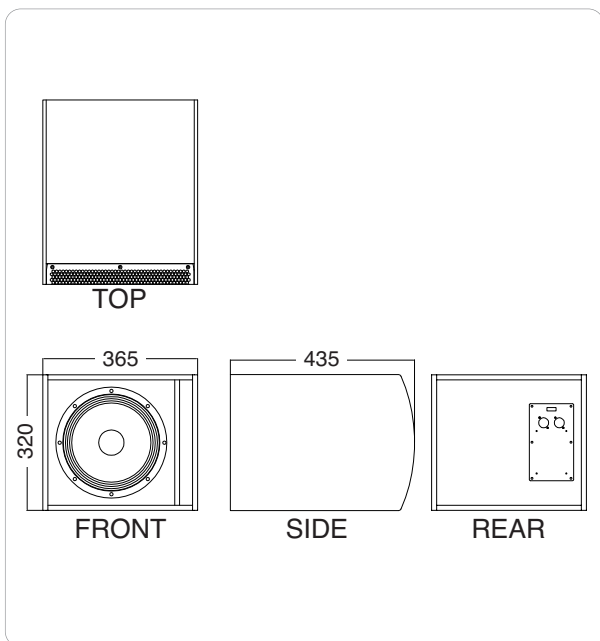
<sup>1</sup> AES standard, pink noise with 6dB crest factor : 2 hour rated power



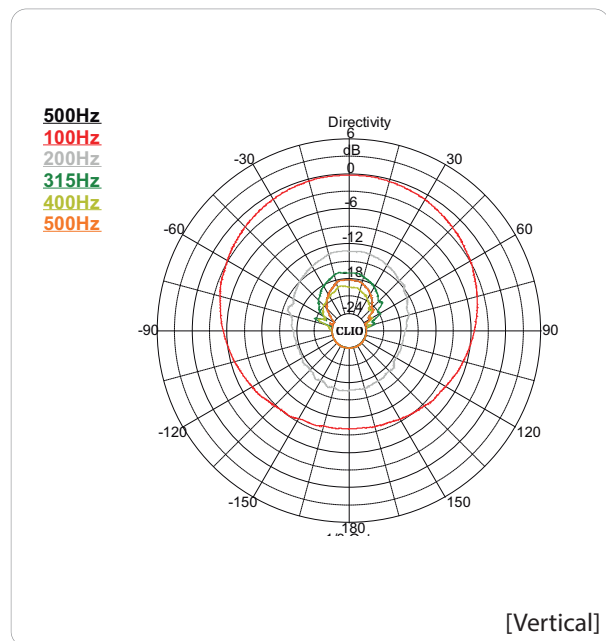
### FREQUENCY/IMPEDANCE RESPONSE



### DIMENSION



### POLAR PATTERN



### FEATURES

- Compact subwoofer for MS Series 2 way full-range system
- High-quality sound
- Nordic birch plywood enclosure

### APPLICATIONS

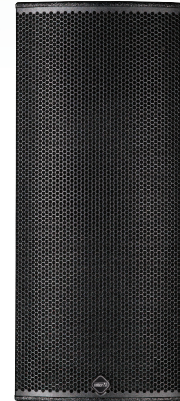
- Religious facility
- Educational institution
- Conference room
- Multipurpose room
- Restaurant

### OVERVIEW

MS Series is consist of 5" 2 way, 6" 2 way, 8" 2 way, 10" subwoofer and dual 10" subwoofer system.

MS Series is the loudspeakers that are used for the purpose of reinforcing the intelligibility of the auxiliary speakers or shade area when designing the space required along the main speakers and the secondary speakers. The shape and capacity take the form that may be used as the foreground or the background speaker. MS Series offers a beautiful appearance and excellent sound quality which suit in important facilities. It is made to be installed in various applications.

MS series, has a bright sound character. The superb treble tone it produces is in harmony with the bass reproduction. As a result, it realizes smooth frequency characteristics and is suitable for music playback applications that require the audio and hi-fi sound quality.



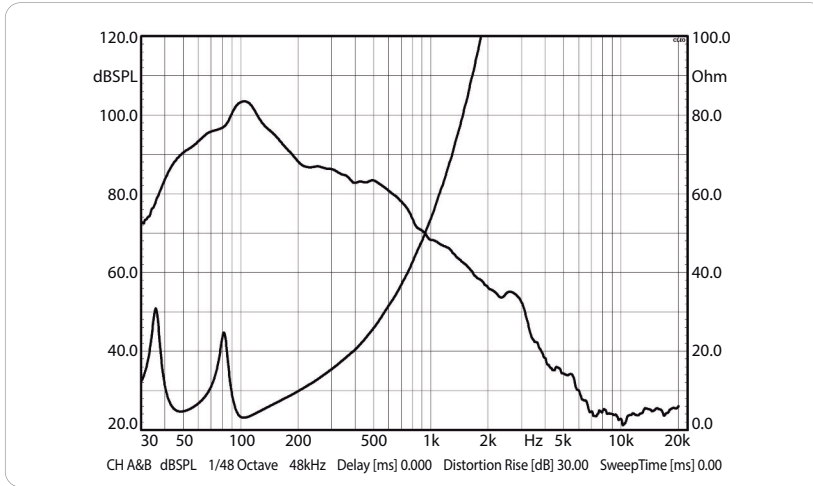
### SPECIFICATIONS

Type	Dual 10" Subwoofer
Frequency Response (-10dB)	35 Hz~250 Hz
Rated Power (AES) <sup>1</sup>	400 W
Rated Power (Program)	800 W
Rated Power (Peak)	1600 W
Recommended Power	800 W
Sensitivity (1W/1m@300, 400, 500, 600Hz)	98 dB
Norminal Dispersion(H×V)	Omni
Nominal Impedance	8 Ω
Recommended High-Pass Filter	35 Hz 12 dB/Oct.
LF Driver	2×10" BEYMA Subwoofer
Enclosure Material	12T Birch Plywood
Grill	Powder Coated Punching Metal
Connectors	2×NL4 + Euroblock
Finish	WATER-BORNE PAINTING
Color	Black/White
Dimensions (W×H×D)	715×320×435 mm/28.1×12.6×17.1 in
Weights(Net/Shipping)	21.6 kg/47.6 lbs

<sup>1</sup> AES standard, pink noise with 6dB crest factor : 2 hour rated power



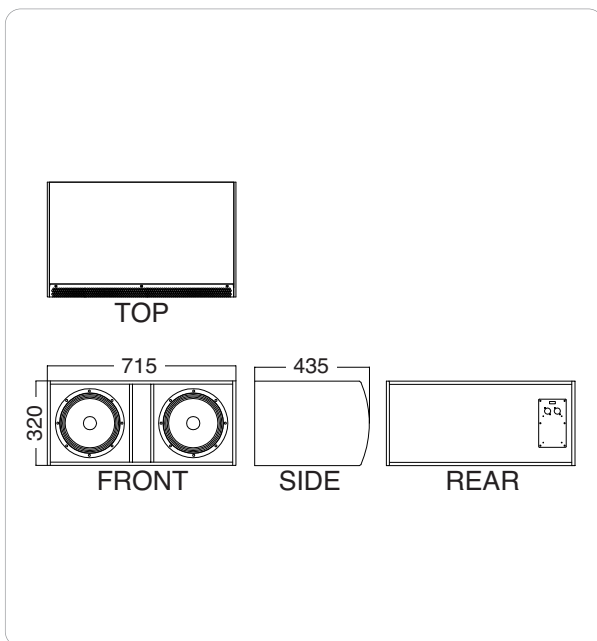
### FREQUENCY/IMPEDANCE RESPONSE



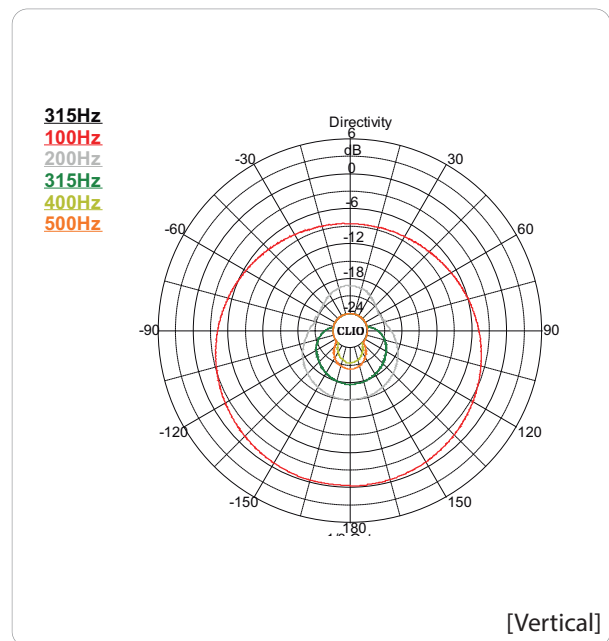
[SPL VS Freq]

[Imp VS Freq]

### DIMENSION



### POLAR PATTERN



[Vertical]

## MS Series



2Way Passive Compact Loudspeaker for Fixed Installation  
10" Compact Subwoofer for Fixed Installation



MS-80



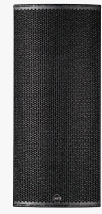
MS-100



MS-130



MS-200S



MS-400S

## IX Series



2Way Passive Portable Loudspeaker Multi-purpose Plastic



IX8/8H/8HT



IX12/12H



IX15/15H

## SE Series



2Way Passive Compact Loudspeaker Fixed Installation



SE-8K/8T



SE-10K/10T



SE-12K



SE-15K

## SQ Series



2Way Passive Full Range Multi-Purpose Loudspeaker



SQ-8K/8T



SQ-10K/10T



SQ-12K



SQ-15K

## CSQ-K Series



2Way Passive High Power Loudspeaker



CSQ-8K



CSQ-10K

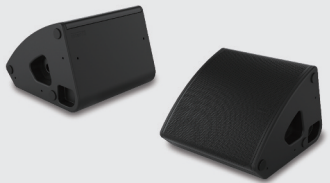


CSQ-12K

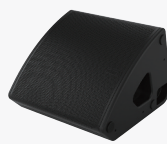


CSQ-15K

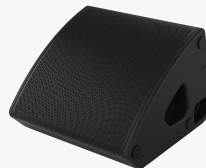
## M Series



12"/15" Coaxial 2 Way Bi-amp Stage Monitor

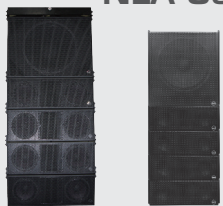


M.2



M.5

## NLA Series



Dual 5"/8" 2Way Passive Line-array Speaker



NLA-5



NLA-15S



NLA-8



NLA-18S

**Inter-M Corp. (IMK)**



719, Dobong-ro, Dobong-gu, Seoul, Korea

Overseas Sales Team

Tel\_ +82-2-2289-8141~7 Fax\_ +82-2-2289-8149 E-mail\_ overseas@inter-m.com

[www.inter-m.com](http://www.inter-m.com)

※ Design and specification are subject to be changed for the improvement of product quality without pre notice.

2016. 3. V1