

WB-150/250/800 SERIES: HTTPS SETUP

INFORMATION

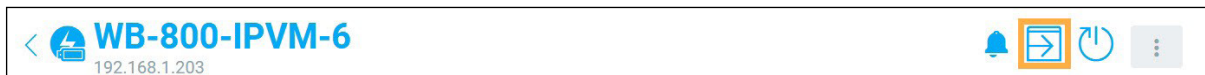
This document contains steps to enable HTTPS on your WattBox 800 series. We recommend using Firefox for these steps, as Chrome and Chromium-based browsers have issues with self-signed certificates.

How to Enable HTTPS

Before enabling HTTPS, we recommend that you save your configuration. After doing so, you can start at step 3

Note: HTTPS is not currently supported on Wi-Fi. It is supported on wired units only.

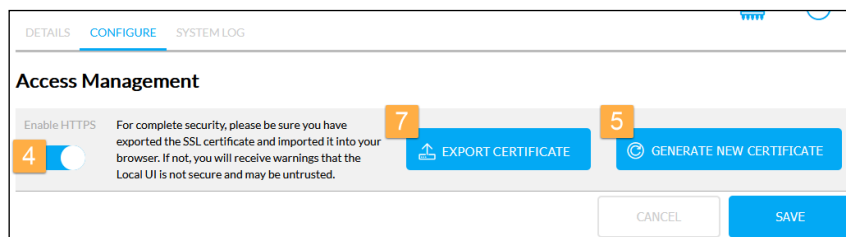
1. Log in to your WattBox by typing the IP address into a web browser, or by using OvrC's web connect feature.



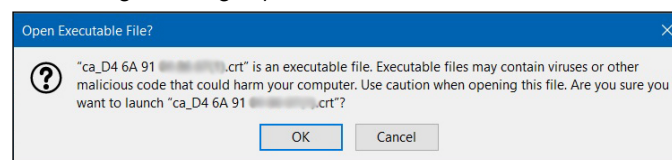
2. Click the **CONFIGURE** tab, then click **Maintenance**. Click the **EXPORT** button to save a configuration file.
3. Click the **CONFIGURE** tab and go to **Access Management**.
4. Click the **Enable HTTPS** toggle.
5. At this point, you may see a grayed-out EXPORT CERTIFICATE and GENERATE NEW CERTIFICATE. Click **GENERATE NEW CERTIFICATE**, which causes the page to refresh.



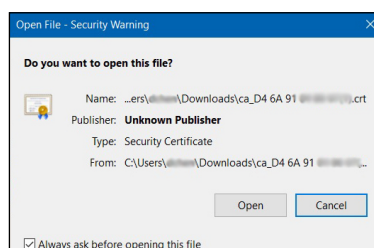
6. If the **Enable HTTPS** toggle has been toggled off, click to re-enable HTTPS.
7. Click **EXPORT CERTIFICATE**, then click **SAVE** to save the certificate to your computer.
8. Locate the exported certificate on your computer and double-click the file. If Firefox is your default browser,



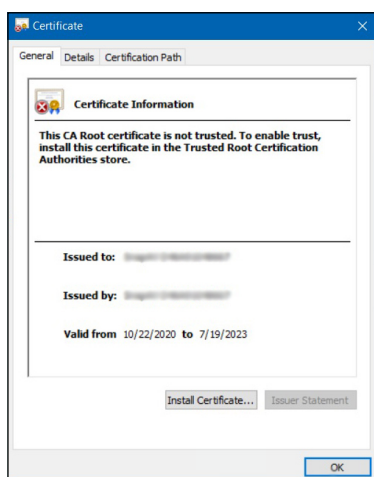
you're presented with a message asking if you want to run an executable file. Click **OK**.



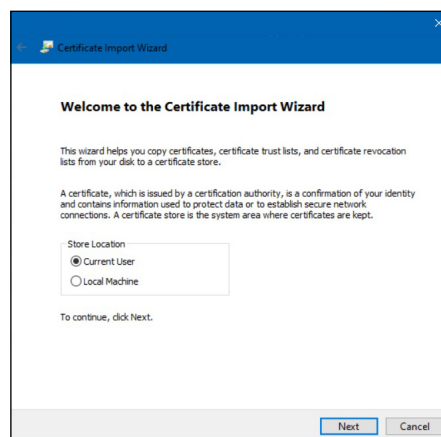
9. Another window asks if you want to open the file. Click **Open**.



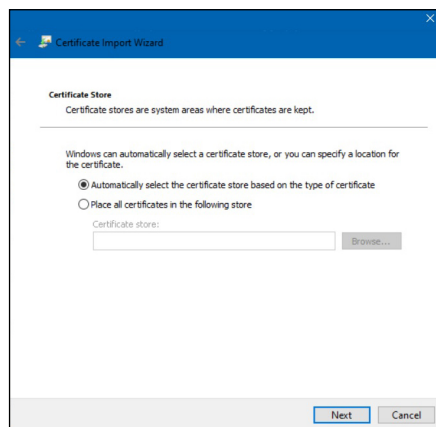
10. A Windows dialog box opens showing you the Certificate Information. Click **Install Certificate**.



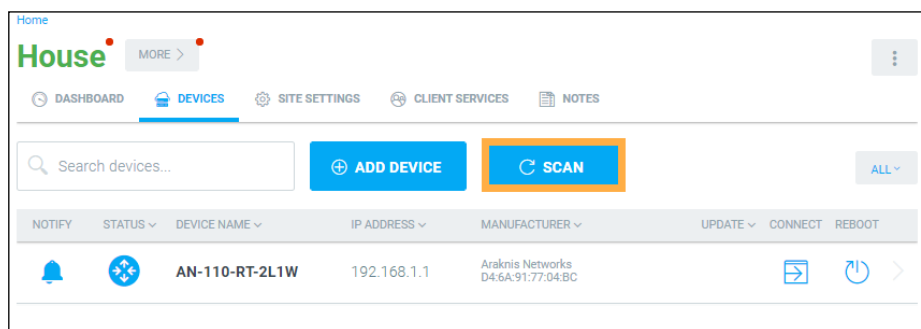
11. The Certificate Install Wizard appears, asking you to select **Current User** or **Local Machine**. Select the best option for your computer and click **Next**.



12. In the next dialog, the option "Automatically select the certificate store based on the type of certificate" is pre-selected. Click **Next**, then click **Finish** on the next window.



13. A window notifies you that the certificate has been successfully imported. Click **OK**, then click **OK** once more to close the certificate window.
If you're using a Mac, the process is very similar, but you're asked to add the certificate to your keychain instead of going through a Certificate Install Wizard.
14. Back in the OvrC page, click **Save**. Wait for the WattBox to restart.
15. The active window times out after the WattBox has restarted, because you're attempting to connect with HTTP. Go back to the OvrC page and click on the web connect icon.
16. If HTTPS was successfully enabled, both HTTP and HTTPS show up. Make sure to select **HTTPS** now that HTTPS is enabled.
Note: If you don't see this option, refresh the web page. If it's an OvrC Pro site, you may need to re-scan the network.



CONTACTING TECH SUPPORT

Phone: 866.838.5052 704.909.5229
Email: TechSupport@SnapAV.com